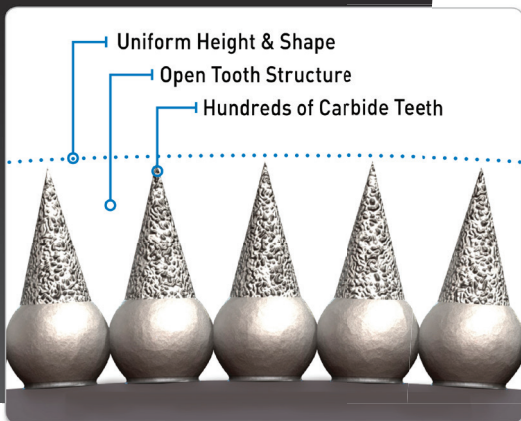


Special Offer

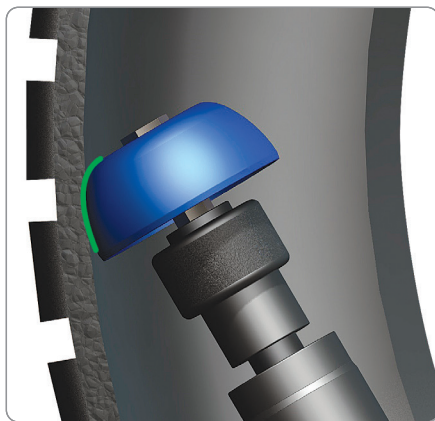
Available 4/1/21 – 4/30/21



10% OFF Select TECH Premium Buffing Tools!



SSG Structured Carbide coatings and unique flared shape maximizes contact, producing a flat, level buffed surface!



- Improved buffed texture – increases repair quality and safety
- Cooler buffing – without scorching
- Decreased buffing time – reduced labor cost
- Smooth operation – improved operator comfort
- Longer wheel life – lower cost per repair & higher profits

Choose the Flared Contour Wheels That Work Best for Your Application

1-1/4" High Performance/Low Profile Tire Buffing Wheel

- Buffs inner liner of low-aspect tires without damaging the bead area
- Machined-steel construction for smooth operation
- Internal thread; no exposed threads at top
- Superb control and comfortable use

Part No.	Diameter	Bore	Coating
RH140	1-1/4"	3/8"-24	Fine (170)

2" Passenger/Light Truck Tire Buffing Wheel

- Proven 2" diameter packs high performance in compact design
- Easy to control – buffs quickly and smoothly
- Much safer than buffing stones

Part No.	Diameter	Bore	Coating
RH102	2"	3/8"	Fine (170)
RH104	2"	3/8"	Medium (230)

2-1/2" All-Purpose Tire Buffing Wheel

- Our most popular wheel
- Covers more tire sizes than any other wheel
- Wide range of applications: Passenger/LT, Medium & Commercial Truck and Retreading

Part No.	Diameter	Bore	Coating
RH107	2-1/2"	3/8"	Fine (170)
RH109	2-1/2"	3/8"	Medium (230)
RH111	2-1/2"	3/8"	Coarse (390)

And don't forget to upgrade your Flared Contour Wheels with PolyPlug Inserts for an even better buffing experience! Try PolyPlugs now and SAVE 20%.

